

# EVACUATION ORDER & ALERT

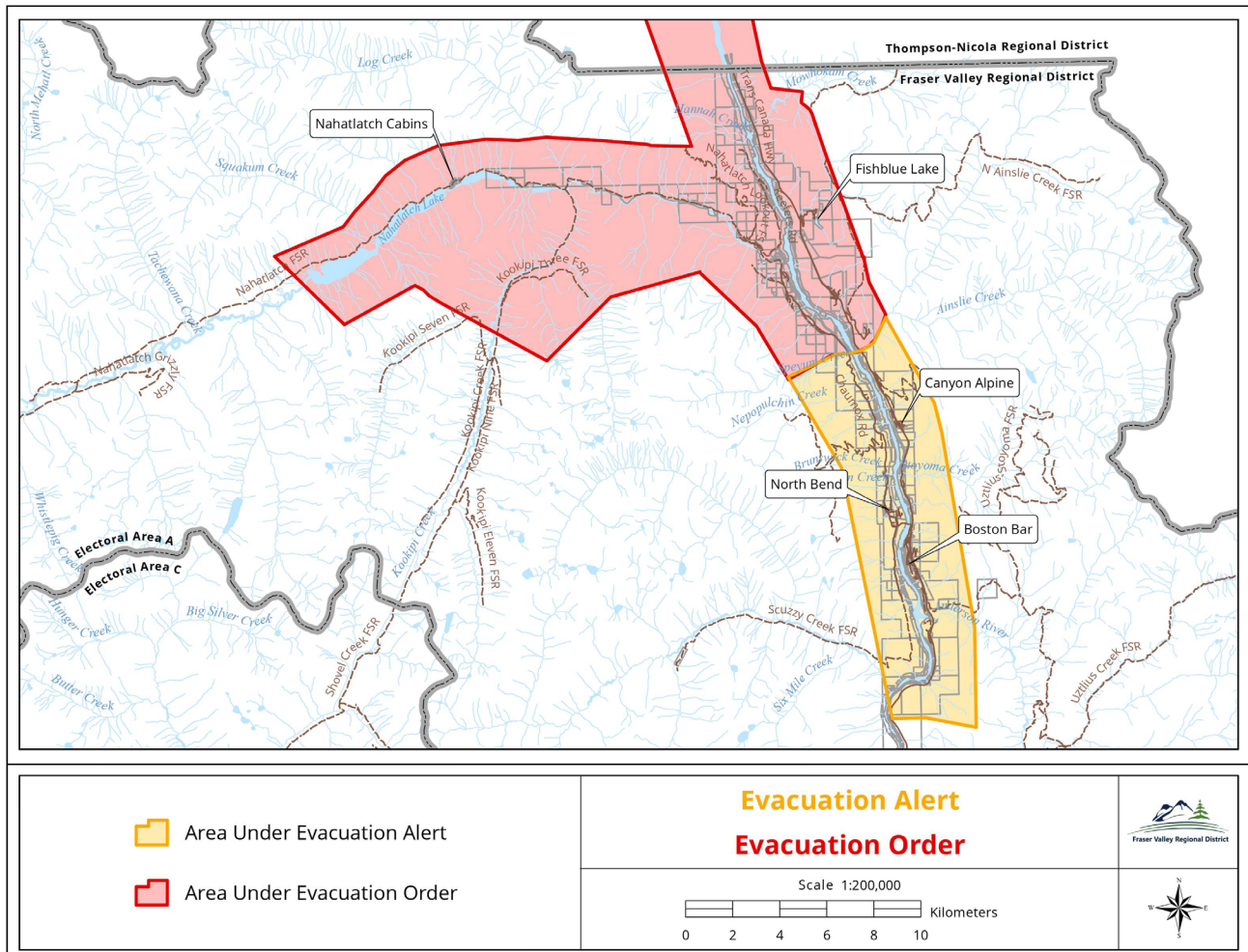
August 17, 2023 9:45PM

## Electoral Area A – Kookipi Creek Wildfire, Nahatlatch River Area, Boston Bar

Pursuant to *Section 12 (1) of the BC Emergency Program Act* and based on the recommendation of the BC Wildfire Service (BCWS), an **Evacuation Order & Evacuation Alert** has been issued by the Fraser Valley Regional District Emergency Operations Centre (EOC) due to immediate risk to life safety posed by the [Kookipi Creek Wildfire](#) in the Nahatlatch River area.

BCWS is implementing a tactical evacuation in the evacuation order area. This evacuation order and alert are being disseminated through Alertable, on FVRD’s website, social media feeds, and through emergency response partners.

This **Evacuation Order and Alert** are in effect for the unaddressed area shown on the map below.



The Evacuation order includes the following locations:

Blue Lake Resort	REO Rafting
Nahatlatch River Recreation Site	Nahatlatch River Cabins
Washtock Family Camground	Log Creek Recreation Site
Flat Iron Recreation Site	Squakum Camground

## WHAT YOU NEED TO DO FOR AN EVACUATION ORDER

- **LEAVE THE EVACUATION AREA IMMEDIATELY.**
- Close all windows and doors.
- Close gates and latch but do not lock.
- Shut off gas and electrical appliances except for refrigerators and freezers.
- Gather your family and if you have room, take a neighbour or someone needing transportation. Do not use more vehicles than you have to
- Take critical items (medicine, ID, cash/cards, keys) only if they are immediately available
- Take pets in kennels or on leashes, with food. Keep tropical pets in their cages.
- Do not use the telephone unless you need emergency service (text family and friends or post on your social media).
- Register with Emergency Support Services (ESS), if available, to report that you have safely left the area

## WHAT YOU NEED TO DO FOR AN EVACUATION ALERT

Prepare for an evacuation order by:

- Locating all family members and designate a meeting area outside the evacuation area, should an Evacuation Order be called while separated
- Packing essential items such as: government issued ID, medications, eyeglasses, valuable papers (i.e. insurance, identification licenses, credit and mortgage info, and emergency contact numbers), and immediate care needs for dependents and pets, and if space and time permits, keepsakes for quick departure
- Preparing to move disabled persons (with mobility aids & supports required to maintain independence), children, elderly and immobile neighbours
- Preparing supplies, vet records, and containment needs for pets
- Implementing a plan to move livestock to safety
- Arranging for transport of your household members
- Arranging accommodation for your household members and pets
- In the event of an evacuation order, Emergency Support Services (ESS) sites may be activated for the purposes of family reunification, referrals to essential service providers, and Group Lodging
- In the event of an evacuation order, register with the Canadian Red Cross to be notified when services become available
- Monitoring credible news sources for information on evacuation orders and locations of ESS Sites

- Receive FVRD emergency alerts by downloading Alertable on your mobile device, or registering to receive critical alerts by text, email, or phone at [fvrd.ca/alerts](http://fvrd.ca/alerts)

**IF YOU CANNOT SELF-TRANSPORT AND ALL NEIGHBOURS HAVE LEFT THE AREA IMMEDIATELY CALL 911.**

**EMERGENCY SUPPORT SERVICES**

Fraser Canyon/Boston Bar Family Place  
65250 Boston Bar Station Road

Hope Secondary School  
444 Stuart St, Hope, BC V0X 1L0

Evacuees for the Nahatlatch Wildfire in Electoral Area A can check with the Evacuee Support Services at Boston Bar Family Place or proceed on to Hope Secondary School. Evacuations can be stressful. Evacuee Services provides short-term emergency lodging & feeding to people impacted by disasters.

- Self-register with Emergency Support Services (ESS) at [ess.gov.bc.ca](http://ess.gov.bc.ca) to report that you have safely left the area. By registering, you will be eligible for emergency shelter and food if you have not made other arrangements.

**IF YOU NEED ASSISTANCE:**

Further information will be issued as it becomes available. Please visit the FVRD's EOC web page at [www.fvrd.ca/EOC](http://www.fvrd.ca/EOC) or Facebook and Twitter (@FraserValleyRD) for updates. You can also sign up on Alertable to receive updates.